

# MONTPELLIER CITY CENTRE

- 1 19 PLACE DE LA COMÉDIE**  
Previously known as **Place de l'Oeuf** (Egg Square) for its oval shape, this is **one of the largest pedestrian zones in Europe**. It was developed beginning in the 17th century.
- 2 19 LES TROIS GRÂCES**  
Created by sculptor Etienne Dantoine in 1773, the **Fountain of the Three Graces** (Aglæa, Euphrosyne and Thalia) is an **emblem of Montpellier**, installed in the middle of Place de la Comédie.
- 3 19 L'ÉCUSSON**  
The district was named after the imposing 19th century **SAINT-ROCH CHURCH & DISTRICT**. Built in 1853, it occupies the former location of the **Château des Guilhem**.
- 4 19 SAINT-ANNE DISTRICT**  
The neo-Gothic church of **Sainte-Anne**, built in 1869 and now desecralized, overlooks the many terraces of restaurants and cafés that visitors can find on this charming pleasant little square. **It is a real village life that brings this area to life.**
- 5 19 TOUR DE LA BABOTE**  
One of two remaining towers from the 14th century **ramparts** which protected the city, it was raised in the 18th century to accommodate the Academy of Science's **astronomical observatory**.
- 6 19 SAINT-ROCH CHURCH & DISTRICT**  
The district was named after the imposing 19th century **SAINT-ROCH CHURCH**, dedicated to the city's **patron saint**. Admire the trompe l'oeil mural on the façade across the street, brimming with **references to the history of Montpellier**.
- 7 19 COURTHOUSE**  
This **neoclassical** style building in 1853, it occupies the former location of the **Château des Guilhem**.
- 8 19 WATER TOWER**  
This **waterworks**, built by Giral in the 18th century, at the same time as the aqueduct, contained the **water reserves** which were supplied for free in the city.
- 9 19 ARC DE TRIOMPHE**  
In the late 17th century, the King's intendant decided to erect an triumphal arch in honour of **Louis XIV**. Imitating the gates of Paris, it was built in the place of one of the eight gates in the **old ramparts**.
- 10 19 PLACE ROYALE DU PEYROU**  
The backdrop for the statue of **King Louis XIV on horseback**, it forms a straight line with the Arc de Triomphe, the water tower and the Saint-Clément Aqueduct.
- 11 19 SAINT-CLÉMENT AQUEDUCT**  
Engineer Henri Pitot de Launay was inspired by the **Pont du Gard** when he built the Saint-Clément Aqueduct in 1754. It was allowed **drinking water** to be supplied from the springs in the town of Saint-Clément.
- 12 19 JARDIN DES PLANTES**  
An island of green just a short way from the Faculty of Medicine, and the oldest botanical gardens in France! Created by Pierre Richer de Belleval in 1593 at the request of Henri IV for the study of **medicinal plants**, it was then expanded and opened to the public in the 19th century. **CLOSED MONDAY June to September: 12 - 8 pm October to May: 12 - 6 pm**
- 13 19 THE CORUM**  
A **conference centre** built by Claude Vasconi in 1988, it also houses the Opéra Berlioz.
- 14 19 ARCHAEOLOGICAL GARDEN**  
A mediaeval archaeological garden. Remains of the **Eglise du Saint-Esprit** (a church built to receive pilgrims in the 13th century) and of the 14th century Pila Saint Gély Gate.
- 15 19 ESPLANADE CHARLES DE GAULLE**  
With its little park, its pond and its playground, this is a lovely haven of peace just a short walk from the city's mediaeval streets.
- 16 19 HÔTEL DES TRÉSORIERIS DE LA BOURSE**  
Court yard open weekdays.
- 17 19 HÔTEL DES TRÉSORIERIS DE LA BOURSE**  
Court yard open weekdays.

- 18 19 AGORA / URSULINE CONVENT**  
Old Ursuline convent built in 1641, then converted into a women's prison during the French Revolution. Today it houses the National Choreographic Centre, **Montpellier Danse** and the **Agora**.
- 19 19 MONTPELLIER CATHEDRAL**  
Pope Urban V, a former student in Montpellier, had a monastery and church built in 1364, that was later transformed into Saint-Pierre Cathedral in 1536. Its Southern Gothic style, and its massive silhouette and its imposing porch supported by two circular pillars all give it the appearance of a **mediaeval fortress**.
- 20 19 FACULTY OF MEDICINE**  
In 1181, Lord Guilhem VIII signed an edict stating that everyone, regardless of religion or origins, had the right to **teach medicine** in Montpellier. This in 1220 was born the oldest **medical school** in the Western world which is still operating today.
- 21 19 CONSERVATOIRE D'ANATOMIE**  
Designed for anatomical instruction, the Conservatoire was an incomparable tool for generations of students before the development of modern techniques for exploring the human body. More than **5,600 pieces** in a building dating from 1851.
- 22 19 TOUR DES PINS**  
The second tower and remains of the fortified walls which once had 25 of them. It was named after the two pine trees growing on top of it.
- 23 19 SAINT-CHARLES CHAPEL**  
The Chapel attached to the general hospital, created in 1678 on the orders of King Louis XIV. Its unique feature was its **two levels of galleries**, corresponding to the storeys on the ground floor. Now the **Maison des Choeurs**, it hosts choir rehearsals and concerts.
- 24 19 KIOSQUE BOSCH**  
One of the first buildings in Montpellier to be made of reinforced concrete, it is also a favourite spot for **shows and entertainment** once the weather turns sunny.

- 25 19 HÔTEL DE VARENNES**  
Court yard open weekdays.
- 26 19 HÔTEL HAGUENOT**  
By request: +33 (0)4 67 92 25 62
- 27 19 CHAPEL OF THE WHITE PENITENTS**
- 28 19 ROYAL CHAPEL OF THE BLUE PENITENTS**
- 29 19 DOMINICAN CONVENT**
- 30 19 DON BOSCO CHURCH**
- 31 19 NOTRE-DAME DES TABLES CHURCH**
- 32 19 SAINT-DENIS CHURCH**
- 33 19 SAINT-MATHIEU CHURCH**
- 34 19 SAINT-ROCH CHURCH**
- 35 19 RUE MAGUELONE PROTESTANT TEMPLE**

- 36 19 ANTIGONE**  
This **neoclassical** district designed by architect Ricardo Bofill contributes to Montpellier's architectural peculiarity.
- 37 19 BANKS OF THE LEZ**  
The banks of the Lez are tree-lined and dotted with footbridges, making them ideal for a **walk or bicycle ride**. Enjoy the view of **L'Arbre Blanc**, the "white tree" designed by S. Fujimoto.
- 38 19 PORT MARIANNE AND CITY HALL**  
Created in the 1990s, this district was built up like a giant jigsaw puzzle. Some of the **biggest names in contemporary architecture** have put their stamp on it, like Portzamparc, Lehmann, Ricciotti, and others. You will want to explore City Hall, the fruit of the imaginations of Jean Nouvel and François Fontès.

- 39 19 GEORGES FRÈCHE SCHOOL OF HOTEL MANAGEMENT**  
This school of excellence specializing in hospitality and tourism is made all of curves and covered with Italian architect Massimiliano Fuksas.
- 40 19 PIERRESVIVES**  
Like a glass and concrete cruise ship run aground, the **centre for knowledge** and sport designed by architect Zaha Hadid and is a christened Pierresvives is a cultural venue **open to the public**. It houses the Héraut Departmental Archives, a media library and an exhibition hall.
- 41 19 PLACE DU XXE SIÈCLE**  
Located in the **Odysseum** shopping centre, it is home to **Memoria Mundi: History through Great Men**. The perimeter of the square includes a portico under which 10 statues by François Cacheux have been installed, each depicting a different **political figure who marked the 20th century**.

- 42 19 MUSÉE FABRE**  
Considered to be one of the **most prestigious fine arts museums** in Europe, it was founded by local painter François-Xavier Fabre in 1825. +33 (0)4 67 14 83 00 museefabre-en.montpellier3m.fr
- 43 19 HÔTEL DE CARRIÈRES SABATIER D'ESPEVRAN**  
Attached to the Musée Fabre, this mansion houses its **Decorative Arts Department**. It includes a series of sumptuous rooms which reproduce the atmosphere of the 18th and 19th centuries. +33 (0)4 67 14 83 00 museefabre-en.montpellier3m.fr
- 44 19 LE MO.CO PANACEE**  
Montpellier's centre for **contemporary culture**. It is a place for creation, experimentation and exhibition. +33 (0)4 34 88 79 79 lapanacee.org
- 45 19 MUSÉE D'ART BRUT**  
800 m<sup>2</sup> dedicated to the icons of Art Brut. Free Figuration, Outsider Art, Folk Art and Mail Art. The museum has pieces by Fernand Michel as well as the **great names in Art Brut**. +33 (0)4 67 79 62 22 atelier-musee.com
- 46 19 MUSÉE FOUGAU**
- 47 19 MUSÉE ATGER**
- 48 19 MUSÉE DU VIEUX MONTPELLIER**

- 49 19 PHARMACIE & CHAPELLE DE LA MISERICORDIE**
- 50 19 MUSÉE DE LA PHARMACIE**
- 51 19 MUSÉE DES MOULAGES**
- 52 19 PAVILLON POPULAIRE**  
Photography gallery
- 53 19 ESPACE DOMINIQUE BAGOUET**  
Art and heritage space
- 54 19 ESPACE SAINT-RAVY**
- 55 19 LA NEF**  
Venue dedicated to craftsmen
- 56 19 LES ATELIERS DES MÉTIERS D'ART**
- 57 19 MONTPELLIER MUNICIPAL ARCHIVES**
- 58 19 MÉDIATHÈQUE EMILE ZOLA**
- 59 19 FRAC**  
(Regional Contemporary Art Collection)

## EXPERIENCE THE REAL GREATER MONTPELLIER!

**HALF DAY FAMILY AN AFTERNOON AT THE ZOO**  
Stop a while at Lunaret Zoo with your family! We're sure you'll melt at the sight of the baby animals. Take a snack break and let your kids play on the playground. Get to know 140 little-known species. Last but not least, it's completely free!

**FULL DAY LAID BACK TAKE IT EASY ALONG SHADY MEDIAEVAL STREETS**  
Come and lose yourself in the mediaeval streets of the Ecusson. Here, you can stroll between unique shops and buildings steeped in history. Take a detour to a small square for a drink in the sun. Keep your eyes peeled for the many works of street art tucked away all over the city. You may also enjoy: The botanical gardens

**FULL DAY BEACH HERITAGE A LITTLE BREAK IN THE GREAT OUTDOORS**  
What would you say to a breath of fresh air far from the hustle and bustle of the city centre? Head to Villeneuve-lès-Maguelone with your picnic, towels and bathing suits. Before hitting the beach, you'll have to stop off at Maguelone Cathedral! Nestled between grapevines and ponds, it will take on a journey back in time. You may also enjoy: A free ride on the Petit Train to take your family to the beach

**FULL DAY KIDS LEISURE GET YOUR FILL OF LEISURE ACTIVITIES!**  
Odysseum doesn't do things half-way. The open-air shopping centre has plenty of options for a great day out: an aquarium, a planetarium, a skating rink, a climbing wall, and a vertical wind tunnel, and the list goes on. In other words, it's not just about shopping. You may also enjoy: A night at the cinema with friends

**24HS TOUR KEY ATTRACTION CONQUERING MONTPELLIER**  
Explore Montpellier guided by the Tourist Office, set off for 2 hours of exploring the city, 2 hours of exploring the city, you book your spot through the Tourist Office, set off for 2 hours of exploring the city, its history, its secrets and its marvels. The star of the show will be the Arc de Triomphe: climb to the top to enjoy 360° panoramic views. Photo op! You may also enjoy: Our guided tour by night! A night at the Opéra

**HALF DAY DELICACIES A TASTE FOR THE GOOD STUFF**  
When the sun is out, people love to go to the new Halles Laissac to enjoy olives, *telles* (seafood pies), *quiches* and tapenades. Take your purchases on board the ultra-modern tram line 4, then stop for a picnic in the sun at Peyrou Gardens. Mediterranean luxury! You may also enjoy: The panoramic view out to sea

**HALF DAY ARCHITECTURE ALONG THE LEZ BY BICYCLE**  
Sport enthusiasts (and neophytes), hop on your bicycles and start pedalling towards Port Marianne and its island of green in the urban jungle. Along your way, you won't want to miss the astonishing architectural exploits which inhabit the area. Stop at the Jacques Coeur Pool for a well-deserved break in the shade of the palm trees. You may also enjoy: The FISE (International Extreme Sports Festival) in the spring!

**MY 100% CULTURAL WEEKEND**  
Stroll from exhibit to exhibit at the Pavillon Populaire and Espace Bagouet for a free cultural prelude. Then head to the Musée Fabre to explore one of the most prestigious fine arts museums in Europe! On Sunday, stop in brunch at the ultra-modern café inside the Panacée, followed by a walk through the site's contemporary art exhibition. You may also enjoy: A night at the Opéra

### LEGEND

- Tourist Office
- Viewpoint
- Starting point of the Petit Train
- Camino de Santiago
- Airport shuttle
- Taxi rank
- Train Station
- Public toilets
- Playground
- Lift
- TaM ticket office
- Pedestrian zone
- Trompe l'oeil mural
- Cycling path / Greenway
- Car park
- Underground car park
- Coach car park
- Tram Park & Ride
- Modulauto car club bay
- Vélo-magg bike hire station
- Currency exchange
- Tram L1
- Tram L2
- Tram L3
- Tram L4

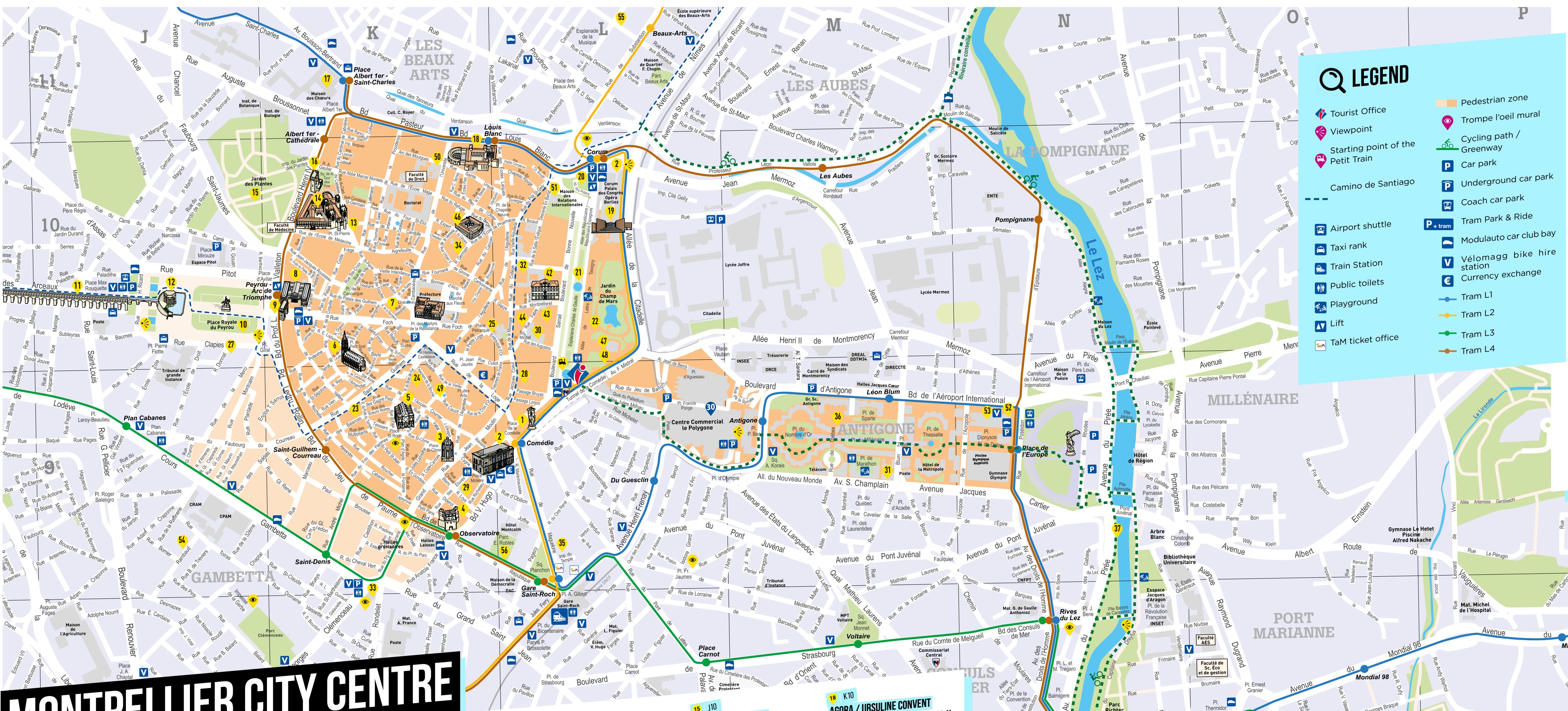
## FIND ALL THE INFO YOU NEED ABOUT THE GREATER MONTPELLIER REGION ON MONTPELLIER-FRANCE.COM

## CONTEMPORARY MONTPELLIER

**39 19 GEORGES FRÈCHE SCHOOL OF HOTEL MANAGEMENT**  
This school of excellence specializing in hospitality and tourism is made all of curves and covered with Italian architect Massimiliano Fuksas.

**40 19 PIERRESVIVES**  
Like a glass and concrete cruise ship run aground, the **centre for knowledge** and sport designed by architect Zaha Hadid and is a christened Pierresvives is a cultural venue **open to the public**. It houses the Héraut Departmental Archives, a media library and an exhibition hall.

**41 19 PLACE DU XXE SIÈCLE**  
Located in the **Odysseum** shopping centre, it is home to **Memoria Mundi: History through Great Men**. The perimeter of the square includes a portico under which 10 statues by François Cacheux have been installed, each depicting a different **political figure who marked the 20th century**.

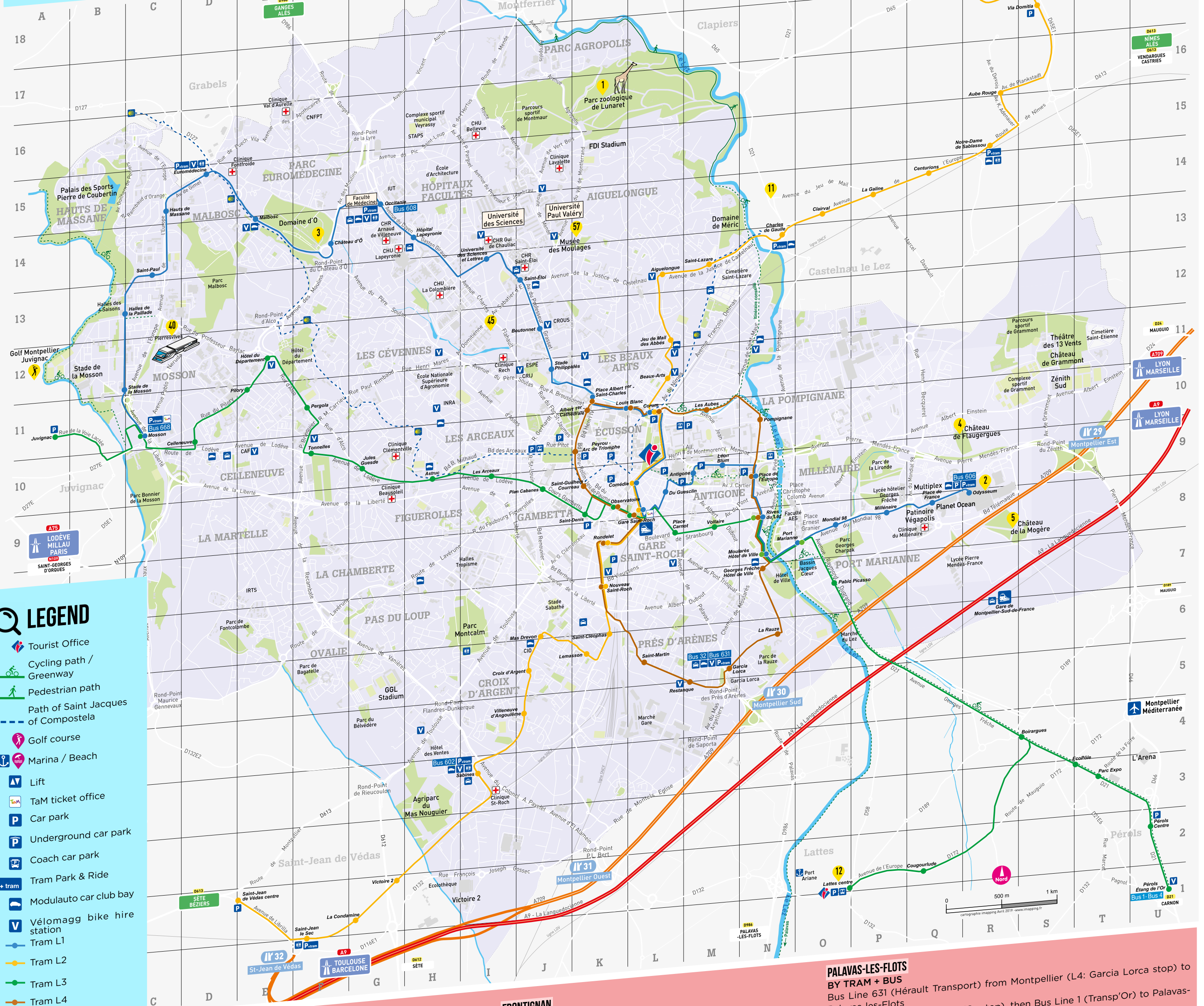




# TOURIST MAP



# MONTPELLIER



### LEGEND

- Tourist Office
- Cycling path / Greenway
- Pedestrian path
- Path of Saint Jacques of Compostela
- Golf course
- Marina / Beach
- Lift
- TaM ticket office
- Car park
- Underground car park
- Coach car park
- Tram Park & Ride
- Modulauto car club bay
- Vélomagg bike hire station
- Tram L1
- Tram L2
- Tram L3
- Tram L4

**TOURIST OFFICE & COUNCIL OF MONTPELLIER MÉDITERRANÉE MÉTROPOLE**  
 Place de la Comédie  
 30 allée Jean de Lattre de Tassigny  
 F-34000 Montpellier  
**+33 (0)4 67 60 60 60**  
 contact@ot-montpellier.fr

**TOURIST INFORMATION BUREAUX**  
**Lattes**  
 Espace Lattara  
 Avenue de Montpellier  
 34970 Lattes  
**+33 (0)7 72 43 65 08**  
 contactlattes@ot-montpellier.fr

MONTPELLIER-FRANCE.COM #MONTPELLIERNOW

## GETTING TO THE BEACH

**TRANSPORT INFORMATION**  
**TRAMS**  
 tam-voyages.com / +33 (0)4 67 22 87 87

**BUSES**  
 herault-transport.fr / +33 (0)4 34 88 89 99  
 www.paysdelor.fr / +33 (0)4 67 20 94 91

**VILLENEUVE-LÈS-MAGUELONE**  
**BY BUS + BICYCLE**  
 Line 32 from Montpellier (L4: Garcia Lorca stop) to Villeneuve-lès-Maguelone (Les Mourses stop or Pilou stop) + Vélomagg Beach\*  
 \* Summer only. Enjoy the use of a bicycle or mountain bike on presentation of your TaM ticket and official identification.

**FRONTIGNAN**  
**BY BUS**  
 Line 602 from Montpellier (L2: Sabines stop) towards the beaches of Frontignan (including Les Aresquiers).

**CARNON / LA GRANDE-MOTTE / LE GRAU-DU-ROI**  
**BY BUS**  
 Line 606 from Montpellier (L1: Place de France / Odysseum stop).

**BY TRAM + BICYCLE**  
 Tram L3 (to Etang de l'Or stop) + Vélomagg.

**PALAVAS-LES-FLOTS**  
**BY TRAM + BUS**  
 Bus Line 631 (Hérault Transport) from Montpellier (L4: Garcia Lorca stop) to Palavas-les-Flots  
 or Tram Line 3 (to Etang de l'Or stop), then Bus Line 1 (Transp'Or) to Palavas-les-Flots.

**BY TRAM + BICYCLE**  
 Tram L3 (to Etang de l'Or stop) + Vélomagg.

**GETTING TO THE SEASHORE BY BICYCLE**  
 Following the hard-top cycling trail along the banks of the Lez from Montpellier (Port Marianne). A 16 kilometre return trip (via Lattes), open to cyclists, pedestrians and rollerbladers.

**ACCUEIL VÉLO**  
 To ViaRhôna + Mediterranean Cycle Route

## LEISURE

**1 K16 MONTPELLIER ZOO**  
 Tram L1: St-Eloi stop, then Agropolis shuttle bus: Zoo stop  
 200 acres, 141 species, 11 more than 1,357 animals, 11 kilometres of paths to discover animals from around the world.  
 +33 (0)4 67 54 45 23  
 zoo.montpellier.fr

**2 08 VEGAPOLIS ICE RINK**  
 Tram L1: Place de France  
 Vegapolis offers two rinks with very different ambiances: on one side, the joys of skating, of speed on ice; on the other, it's party time with sound and light shows!  
 +33 (0)4 99 52 26 00 / vegapolis.net

**3 F14 MONTPELLIER DOMAINE D'O**  
 Property with 57 acres of ornamental gardens, open to the public, where visitors will find the 18th century Château d'O, the Théâtre d'O and the Amphithéâtre d'O.  
 +33 (0)4 67 67 31 00  
 domainedo.fr

**4 R10 MONTPELLIER CHÂTEAU DE FLAUGERGUES**  
 The oldest of Montpellier's "follies". A family home built in 1696 with French-style gardens and botanical gardens. A vineyard. Tours of the château, gardens and wine cellar with tastings of wines made on the property.  
 +33 (0)4 99 52 66 37  
 flaugergues.com/US

**5 RB MONTPELLIER CHÂTEAU DE LA MOGÈRE**  
 An inhabited 18th century folly and listed historical monument with drawing rooms decorated with plasterwork. Château and gardens open to the public.  
 +33 (0)4 67 65 72 01  
 lamogere.fr

**6 LAVERUNE CHÂTEAU DE L'ENGARRAN**  
 An 18th century folly and listed historical monument. Be sure to explore its French gardens and wine museum. Tastings of wine from the property.  
 +33 (0)4 67 47 00 02  
 chateau-engarran.com

**7 LAVERUNE CHÂTEAU DES ÈVÈQUES**  
 Also known as the Château de Lavérune. Dating from the 18th century, it was the residence of the bishops of Montpellier. A listed Italianate music room from the 18th century, recently renovated. Today it is home to the Hofer-Bury Museum.  
 +33 (0)4 99 51 20 00

**8 CASTRIES CASTRIES AQUEDUCT & CASTLE**  
 A remarkable structure created by Pierre Paul Riquet in 1670 which conveyed water 6,822 metres to the gardens of the Château de Castries. Considered to be the largest private hydraulic structure in France. You'll also want to explore the 17th century park at the Château de Castries, designed by André Le Nôtre.  
 +33 (0)4 67 52 04 24

## HERITAGE

**9 PIGNAN VIGNOUL ABBEY**  
 Remains of a 12th century monastery of Benedictine and then Cistercian nuns.  
 +33 (0)6 01 73 57 70  
 abbaye-de-vignoul.fr

**10 VILLENEUVE-LÈS-MAGUELONE MAGUELONE CATHEDRAL**  
 A beautiful Romanesque construction between sea, ponds and grapevines.  
 +33 (0)4 67 50 49 88  
 www.compagnons-de-maguelone.org

**11 LATTES LATTARA ARCHAEOLOGICAL SITE - HENRI PRADES MUSEUM**  
 Located at the edge of the Archaeological Site of Lattara, the museum possesses collections from digs conducted in the ancient port city and nearby sites.  
 +33 (0)4 67 99 77 20  
 museearcheo.montpellier3m.fr

**12 LATTES LATTARA ARCHAEOLOGICAL SITE - HENRI PRADES MUSEUM**  
 Located at the edge of the Archaeological Site of Lattara, the museum possesses collections from digs conducted in the ancient port city and nearby sites.  
 +33 (0)4 67 99 77 20  
 museearcheo.montpellier3m.fr

**13 MURVIEL-LÈS-MONTPELLIER ARCHAEOLOGICAL MUSEUM PAUL SOYRIS**  
 +33 (0)4 67 27 88 28  
 or +33 (0)4 67 47 71 74 (City Hall)

**14 CASTELNAU-LE-LEZ REGIONAL RESISTANCE AND DEPORTATION HISTORY CENTRE**  
 +33 (0)4 67 14 27 45

**15 SAHARA MUSEUM**  
 +33 (0)6 67 29 94 42  
 museesaharien.fr

## GREAT IDEAS

**GUIDED TOURS**  
 The Tourist Office organizes guided tours all year long. Programme available from the Tourist Office on Place de la Comédie.  
 Starting from €9.

**AUDIO GUIDE**  
 Explore Montpellier's historical centre the way you want. 30 sites with commentary. Available in English, French, German, Italian and Spanish. Suitable for people with visual or hearing impairments.  
 Price: €10 / Discounted: €8  
 Security deposit: €70  
 Hire from the Tourist Office.

**POCKET WIFI**  
 HipPocketWiFi gives you access to a 4G high-speed internet connection.  
 €8/day  
 €4/day with the City Card  
 Hire from the Tourist Office.

**CITY CARD**  
 With your 24, 48 or 72 hour City Card, enjoy free and reduced entry to a selection of sites and activities in and around Montpellier.  
 Starting from €15  
 -50% for children under 18  
 For sale at the Tourist Office and on montpellier-france.com

**PETIT TRAIN**  
 Tour of the historical city centre on a tourist train with commentary (40 min). Open March to mid-November. Wheelchair accessible.  
 +33 (0)4 67 66 24 38  
 Point of sale: Kiosk on Place de la Comédie  
 Starting from €9.

**TICKETING & SHOWS**  
 The Tourist Office on Place de la Comédie is a France Billet box office, a great way to collect your tickets any day of the week.  
 +33 (0)4 67 60 60 60

**TOURIST OFFICE SHOPPING CORNER**  
 Stock up on gifts at the shop inside the Tourist Office on Place de la Comédie, olive Grisettes, tapenade, olive oil, carafes, earthenware, mugs, bracelets, chocolate, books, clothes, etc.: more than 170 items for you to check out!  
 -10% with the City Card  
 Non-binding information, subject to change.

**HERAULT TRANSPORT DEPARTMENTAL BUS SYSTEM**  
 herault-transport.fr  
 +33 (0)4 34 888 999

**MODULAUTO**  
 04 67 58 06 06

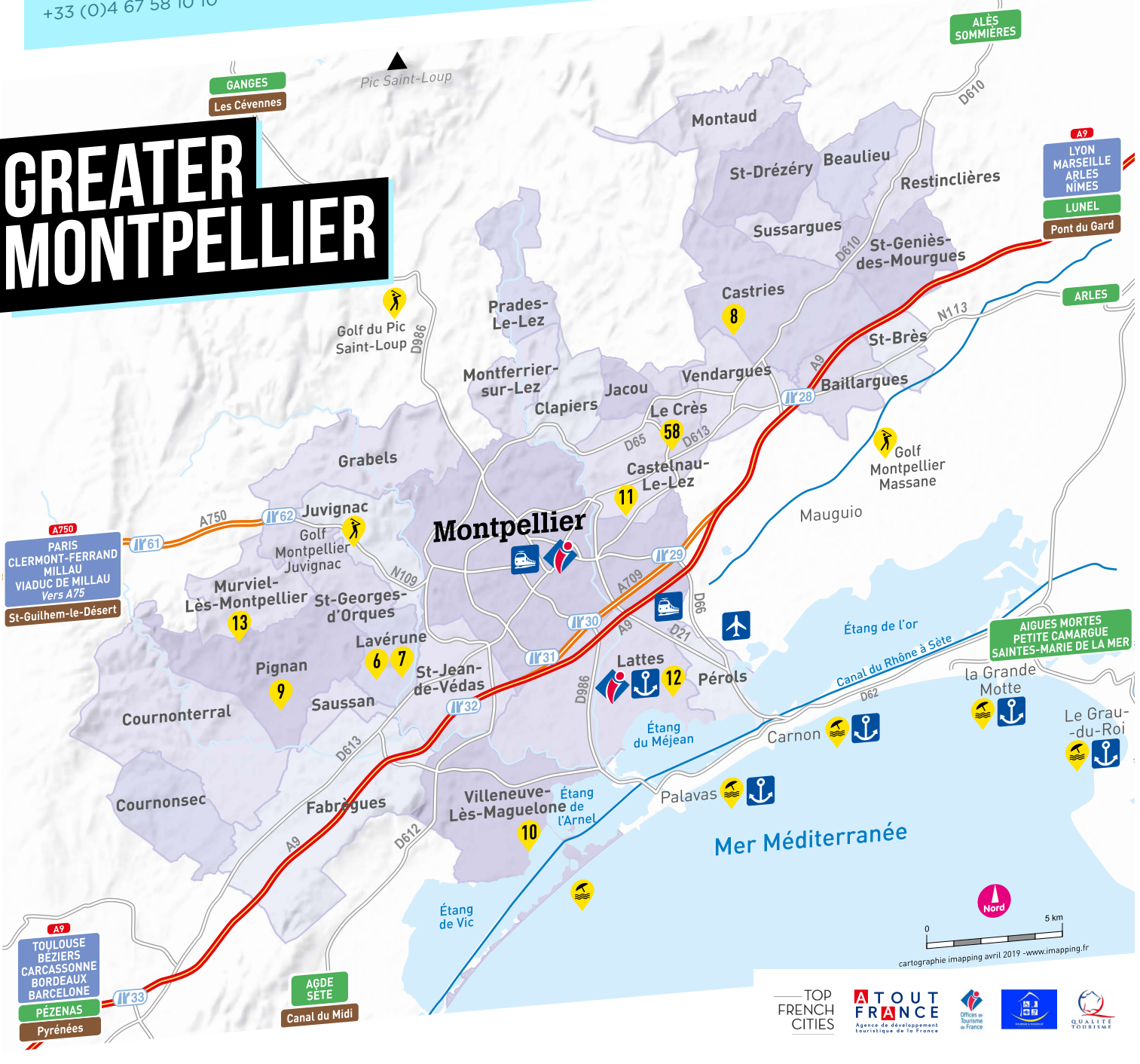
**TOTEM MOBI**  
 04 91 49 22 75

**TAXIS**  
 Montpellier Taxi Bleu du Midi  
 +33 (0)4 67 03 20 00  
 Taxi Tram  
 +33 (0)4 67 58 10 10

**TAM TRAMS**  
 4 lines:  
 Line 1 (Mosson - Odysseum),  
 Line 2 (Juvignac - Saint-Jean-de-Védas),  
 Line 3 (Juvignac - Lattes & Pérols) and Line 4 (Garcia Lorca).  
 Tram Park & Ride: 16 car parks linked to the four tram lines, offering more than 4,000 parking spaces, free for TaM pass holders.

**TAM VELOMAGG**  
 Hire a bicycle for up to 24 hours straight, available 24/7. There are more than 50 automated bike hire stations across the city. To pay, use a bank card or the voice server on +33 (0)9 69 39 00 99.

**TAM INFORMATION**  
 tam-voyages.com  
 +33 (0)4 67 22 87 87  
 TaM ticket offices:  
 > 6 rue Jules Ferry  
 > 27 rue Maguelone (L1, 2, 3 & 4: Gare St-Roch stop)  
 > Mosson Tram Park & Ride (L1 & 3: Mosson stop)



CREATION: MONTPELLIER MÉDITERRANÉE TOUROS & CONVENTIONS - DO NOT LITTER

